

## Manhattan 25 Metro façade.

Fixed price \$695,500\*

 4  2  2

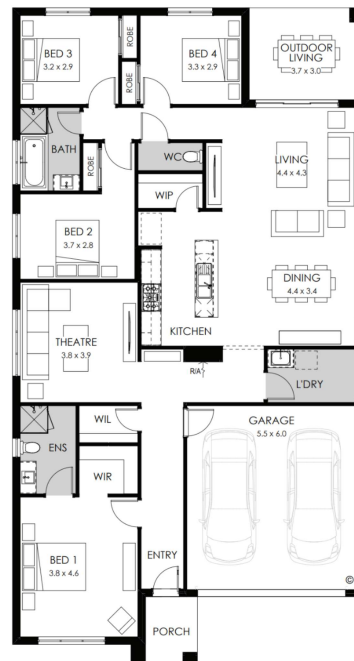


### Lot 1113 Yarrabee Street, Lara Lara Lakes Estate

Land size: 448m<sup>2</sup>

Home size 229.47m<sup>2</sup>

- Fixed site costs
- Metro façade included
- 7-Star energy rating
- Low E Double glazed thermally broken awning windows
- Low E Double glazed sliding stacker doors
- 3.5kW solar PV system
- Quality flooring throughout
- 2400mm high ceilings
- 900mm Westinghouse kitchen appliances
- 20mm stone benchtops to kitchen
- Quality chrome or matt black tapware, throughout
- Quality Dulux paint
- 25 Year Structural Guarantee & 12 Month Maintenance
- Opticomm Fibre Optic Connection Point



YOUR LOCAL NEW HOMES CONSULTANT

Dale Sandwith 0433 024 286 | [dsandwith@boutiquehomes.com.au](mailto:dsandwith@boutiquehomes.com.au)

Image used is an artist impression for illustrative purposes only and may show decorative items not included. The price is based on developer supplied engineering plans and plans of subdivision and final pricing may vary if actual site conditions differ to those shown in these developer supplied documents block and building dimensions may vary from the illustration and the details shown. The price does not include transfer duty, settlement costs, community infrastructure levies imposed or any other fees or disbursements associated with the settlement of the land. Additions to the contract may be required in order to comply with Council and Regulatory Authority requirements which may also affect the price. Pricing subject to change without notice. Further terms and conditions apply to this offer including with respect to the price, for the full terms and conditions please visit [www.boutiquehomes.com.au/terms-conditions](http://www.boutiquehomes.com.au/terms-conditions). All plans are protected by copyright and are owned by ABN Group (Vic) Pty Ltd. The building practitioner is ABN Group (Vic) Pty Ltd trading as Boutique Homes, registration number CDB-U-45215. Boutique Homes reserves the right to change home design measurements and design options without notice. All information contained within this document is accurate at time of printing. Boutique Homes is responsible for providing the connection point only. It is the owner's responsibility to arrange for connection services (gas, NBN, water, etc).

**Lara Lakes**  
LARA